

Metal Roofing On Demand™

Accessory Catalog

Carlisle Metal Products Accessory Catalog

Carlisle Metal Products' accessory catalog offers you a wide array of choices to complete your metal roof system, and along with our integrated supply chain, this catalog makes it extremely easy to do business with us. Our product offering includes: coil, flat sheet, clips, fasteners, seamers, tube sealant, and more. Simply put, Carlisle Metal Products has everything you need to complete your next roofing project.

Carlisle Metal Products is a leading supplier of equipment, materials, and technical support for the regional manufacturing of metal roofing. Carlisle Metal Products supplies contractors and distributors with the equipment and materials to fabricate metal roofing panels on-demand through a low-cost supply chain versus purchasing prefabricated metal roofing panels.

Carlisle Metal Products puts a strong emphasis on integrity and customer service, particularly in the area of finding solutions to the specific challenges facing individual customers. Carlisle Metal Products puts the power to cost-efficiently fabricate high quality metal roofing components on-demand.

Our engineering and technical expertise gives our installers and manufacturers the tools to increase profitability and customer satisfaction, as well as the peace of mind to take the next step in building a more successful business. Specifically, through DM-ARM, Carlisle Metal Products provides state-of-the-art panel fabrication machinery, comprehensive training, an unparalleled quality assurance program, a reliable material supply chain, a robust warranty program, and responsive on-demand customer service and technical support.

Carlisle Metal Products customers have everything they need to obtain quick, hassle-free approvals and we reward that commitment with increased opportunities for success backed by responsive, on-demand customer service and skilled technical support.



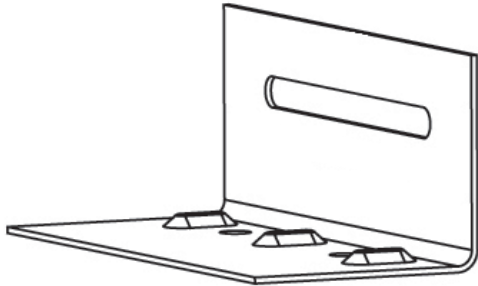
Table of Contents

Clips	4-9
Fasteners	10-11
Coils and Sheets	12-15
Roll Formers	16
Hemming Tools	17
Seamers	18-19
Hand Tools	20-21
Snow Guard	22-23
Sealant	24
Pipe Flashing	25
Drexmet Paint Pens	25
Underlayment	26
Warranties	27

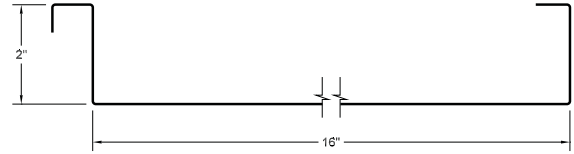


CMP System Clips

CMP 200S Butterfly Base 2", 2 Hole



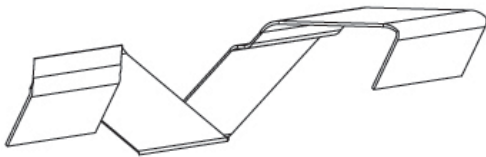
Height	1.75"
Width	2"
Length	4.5"
Holes	2-Hole



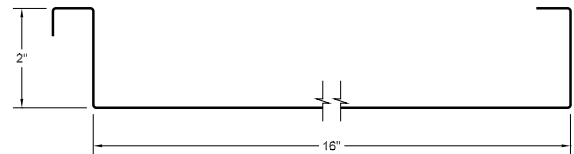
Part No.	Clip Type	Material	Carton Qty.	Ga.
SCBM 18 2 G	2" Butterfly Base	Galvanized	150	18
SCBM 18 2 S	2" Butterfly Base	Stainless Steel*	150	18

*Requires additional lead time.

CMP 200S Butterfly Tab 2"



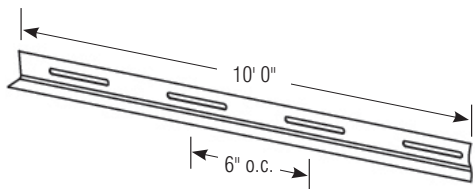
Height	.90"
Width	.71"



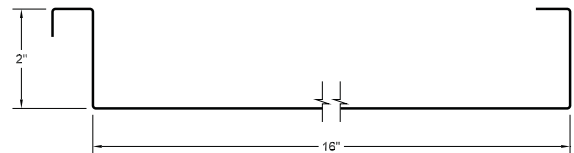
Part No.	Clip Type	Material	Carton Qty.	Ga.
SCTM 22 2 G	2" Butterfly Tab	Galvanized	150	22
SCBM 22 2 S	2" Butterfly Tab	Stainless Steel*	150	22

*Requires additional lead time.

CMP 200S Continuous Base 2", 6" Slot Spacing



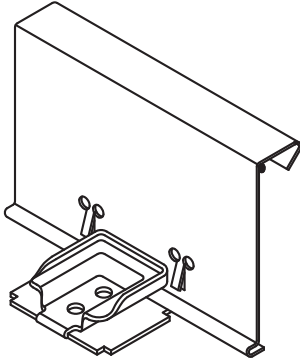
Height	1.75"
Width	2"
Length	10'-0"



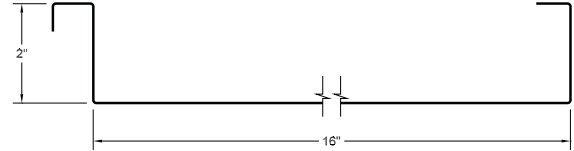
Part No.	Clip Type	Material	Carton Qty.	Ga.
SCBM 18G X 10' G	2' Continuous Base	Galvanized	100	18
SCBM 18G X 10' S	2" Butterfly Base	Stainless Steel*	100	18

*Requires additional lead time.

CMP 200S Floating Clip 2-3/8"



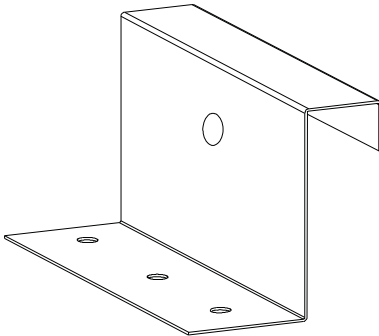
Height	2.39"
Width	4.30"
Holes	2-Hole



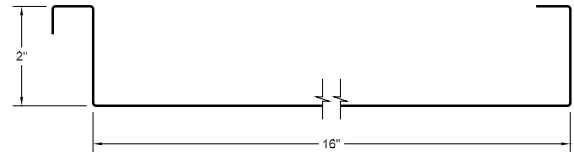
Part No.	Clip Type	Material	Carton Qty.	Ga.*
1069206	2-3/8" Floating	Galvanized	100	16/22

For use with Rollformer, New Tech, Zimmerman.
*16 ga base. 22 ga tab.

CMP 200S Fixed Clip 2-1/8"



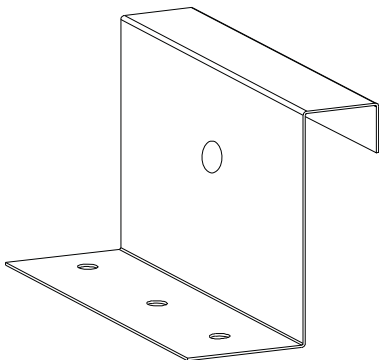
Height	2.125"
Width	3.00"
Holes	3-Hole



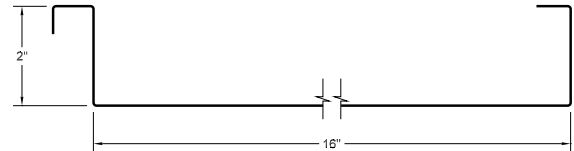
Part No.	Clip Type	Material	Carton Qty.	Ga.
FC 24 2 G	2" Fixed	Galvanized	600	24
FC 22 2 G	2" Fixed	Galvanized	600	22
FC 24 2 S	2" Fixed	Stainless Steel*	600	24
FC 22 2 S	2" Fixed	Stainless Steel*	600	22

*Requires additional lead time.

CMP 200S Fixed Clip 2-3/8"



Height	2.38"
Width	3.00"
Holes	3-Hole

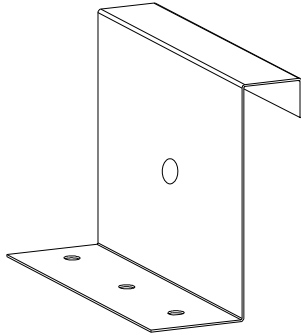


Part No.	Clip Type	Material	Carton Qty.	Ga.
FC 22 2.5 X 3G	2-3/8" Fixed	Galvanized	600	22
FC 22 2.5 X 3S	2-3/8" Fixed	Stainless Steel*	600	22

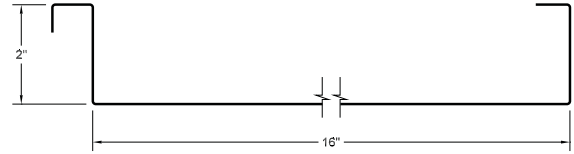
*Requires additional lead time.

CMP System Clips

CMP 200S Fixed Clip 3"



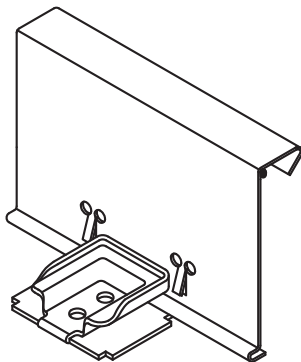
Height	3.00"
Width	3.00"
Holes	3-Hole



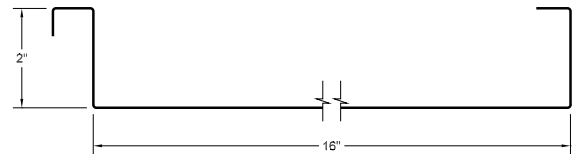
Part No.	Clip Type	Material	Carton Qty.	Ga.
FC 22 3 G	3" Fixed	Galvanized	600	22
FC 22 3 S	3" Fixed	Stainless Steel*	600	22

*Requires additional lead time.

CMP 200S Floating Clip 3"



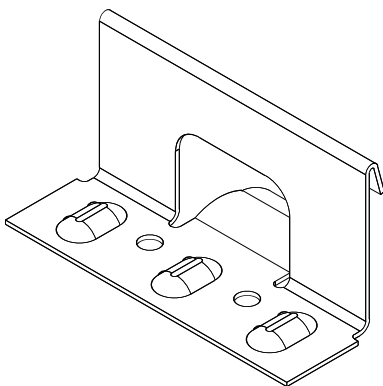
Height	3.00"
Width	4.30"
Holes	2-Hole



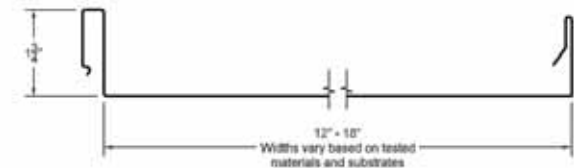
Part No.	Clip Type	Material	Carton Qty.	Ga.
1082063	3" Floating	Galvanized	100	16/22

* 16 ga Base, 22 ga Tab

CMP 175S Snap Lock 1-3/4" Clip



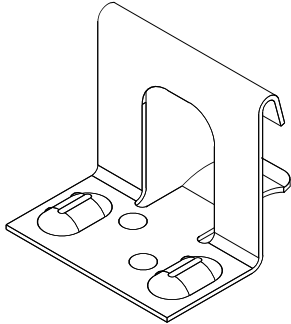
Height	1.827"
Width	3.5"
Holes	2-Hole



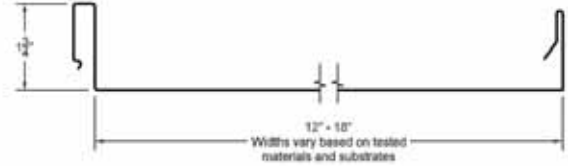
Part No.	Clip Type	Material	Carton Qty.	Ga.
FC 18 1.75UL G	1-3/4" UL Clip	Galvanized	250	18
FC 18 1.75UL S	1-3/4" UL Clip	Stainless Steel*	250	18

*Requires additional lead time.

CMP 175S Non-UL Snap Lock 1-3/4" Clip



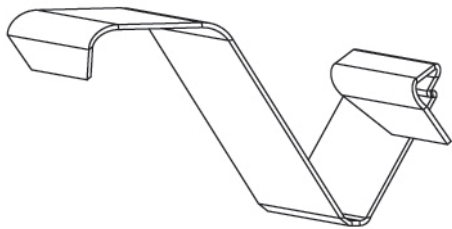
Height	1.827"
Width	2.00"
Holes	2-Hole



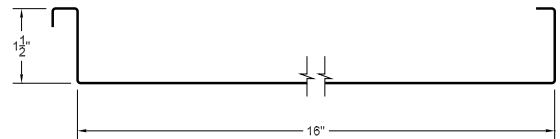
Part No.	Clip Type	Material	Carton Qty.	Ga.
FC 18 1.75N G	1-3/4" Non-UL Clip	Galvanized	400	18
FC 18 1.75N S	1-3/4" Non-UL Clip	Stainless Steel*	400	18

*Requires additional lead time.

CMP 150SS Butterfly Tab 1-1/2"



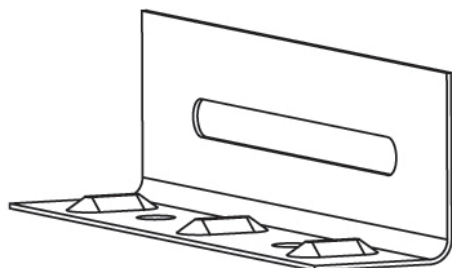
Height	.91"
Width	.40"



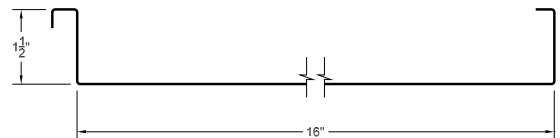
Part No.	Clip Type	Material	Carton Qty.	Ga.
SCTM 24 1.5 G	1-1/2" Butterfly Tab	Galvanized	200	24
SCTM 24 1.5 S	1-1/2" Butterfly Tab	Stainless Steel*	200	24

*Requires additional lead time.

CMP 150SS Butterfly Base 1-1/2", 2 hole



Height	1.25"
Width	1.0"
Length	4.5"
Holes	2-Hole

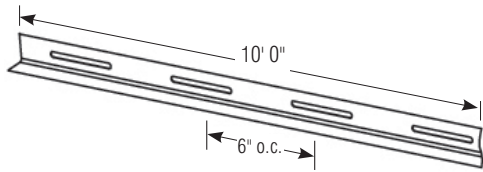


Part No.	Clip Type	Material	Carton Qty.	Ga.
SCBM 22 1.5 G	1-1/2" Butterfly Base	Galvanized	200	22
SCBM 22 1.5 S	1-1/2" Butterfly Base	Stainless Steel*	200	22

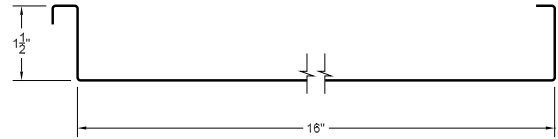
*Requires additional lead time.

CMP System Clips

CMP 150SS Continuous Base 1-1/2", 6" Slot Spacing

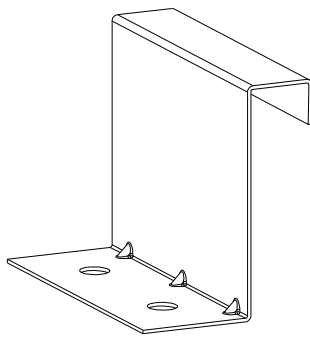


Height	1.25"
Width	1"
Length	10'-0"

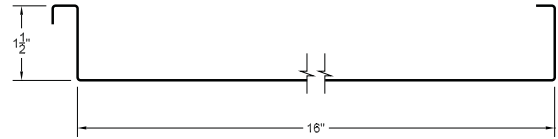


Part No.	Clip Type	Material	Carton Qty.	Ga.
SCBM 22G X 10' G	1-1/2" Continuous Base	Galvanized	125	22

CMP 150SS Fixed Clip 1-1/2"



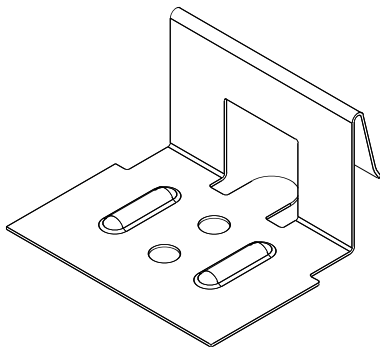
Height	1.625"
Width	2"
Holes	2-Hole



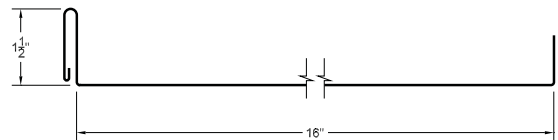
Part No.	Clip Type	Material	Carton Qty.	Ga.
FC 24 1.625 X 2 G	1-1/2" Fixed Clip	Galvanized	1000	24
FC 24 1.625 X 2 S	1-1/2" Fixed Clip	Stainless Steel*	1000	24

*Requires additional lead time.

CMP 150SL Snap Lock Clip 1-1/2"



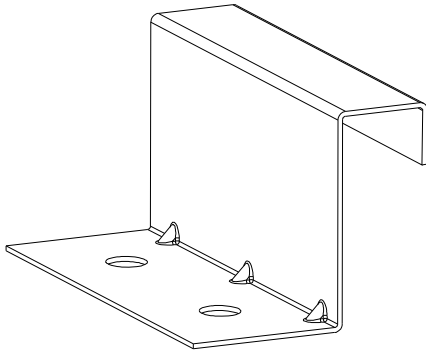
Height	1.30"
Width	2"
Holes	2-Hole



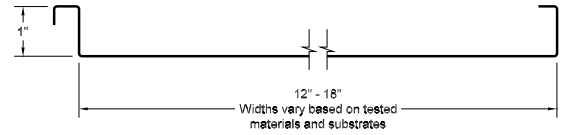
Part No.	Clip Type	Material	Carton Qty.	Ga.
FC 24 1.25 X 2 G	1-1/2" Snap	Galvanized	600	24
FC 24 1.25 X 2 S	1-1/2" Snap	Stainless Steel*	600	24

*Requires additional lead time.

CMP 100SS Fixed Clip 1"



Height	1.13"
Width	2"
Holes	2-Hole

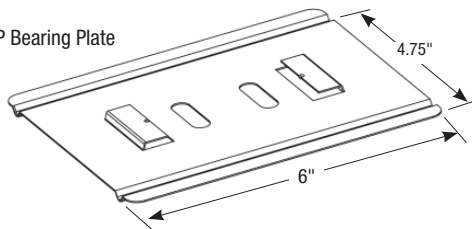


Part No.	Clip Type	Material	Carton Qty.	Ga.
FC 24 1.125 X 2 G	1" Fixed Clip	Galvanized	1,000	24
FC 24 1.125 X 2 S	1" Fixed Clip	Stainless Steel*	1,000	24

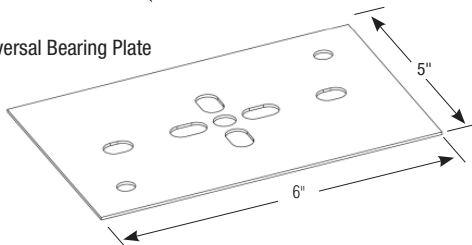
*Requires additional lead time.

Bearing Plates

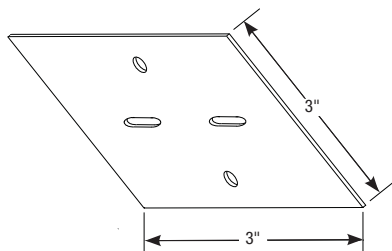
CMP Bearing Plate



Universal Bearing Plate

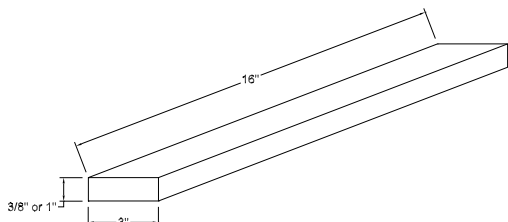


3" Bearing Plate





















Part No.	Type	Material	Carton Qty.	Ga.
5060-SLU-24-G	CMP Bearing Plate	Galvanized	125	24
5060-BP-18-G	Universal Bearing Plate	Galvanized	125	18
5060-BP-20-G	Universal Bearing Plate	Galvanized	125	20
5060-BP-22-G	Universal Bearing Plate	Galvanized	125	22
5060-BP-24-G	Universal Bearing Plate	Galvanized	125	24
5060-BP-24-G	Universal Bearing Plate	Stainless Steel	125	24
3030-BP-18-G	3" x 3" Bearing Plate	Galvanized	125	18

Thermal Blocks





Part No.	Type	Material	Carton Qty.
3/8" Thermal Block	3/8" x 3" x 16"	2 lb Foam	96
1" Thermal Block	1" x 3" x 16"	2 lb Foam	96

Fasteners

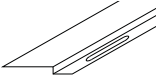
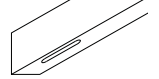
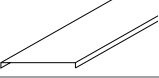
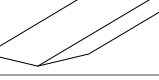

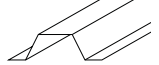
	Description	Size	Material	CMP Code	Color
	Low Pro. Pancake Head Woodscrew	#10-9 x 1-1/8"	Galvanized	CF101.125A C	TQ
	Pancake Head Woodscrew	#10-13 x 1"	Galvanized	CF101.0A TQ	TQ
	Pancake Head Woodscrew	#10-13 x 1"	Stainless Steel	CF101.0A SS	MF
	Pancake Head Woodscrew	#10-13 x 1-1/2"	Galvanized	CF101.5A TQ	TQ
	Pancake Head Woodscrew	#10-13 x 1-1/2"	Stainless Steel	CF101.5A SS	MF
	Drexmet Woodscrew	#10-15 x 1-1/2"	Galvanized	GF101.5A Z	Various
	Drexmet Woodscrew	#10-12 x 1-1/2"	Painted	GF101.5A Z	Various
	Drexmet Woodscrew	#9-15 x 1-1/2"	Stainless Steel	GF91.5A	MF
	Drexmet Woodscrew	#9-15 x 1-1/2"	Stainless Steel Ptd.	GF91.5A	Various
	Pancake Head Self Driller	#10-16 x 1" DP3	Galvanized	CF101.5SD Z	ZN
	Self Driller N/W	1/4-14 x 1-1/2" DP3	Galvanized	GF.25X1.50SD TQ	TQ
	Self Driller N/W Shoulder	#12-14 x 1-1/4" DP2	Galvanized	GF121.25SD Z	MF
	Self Driller Drexmet Head	#12-14 x 1-1/2" DP3	Stainless Steel Cap	GF121.5SD Z	MF
	Self Driller Drexmet Head	#12-14 x 1-1/2" DP3	Zinc Cap Ptd.	GF121.5SD Z	Various
	Self Driller Drexmet Stitch	1/4-14 x 7/8" DP1	Zinc Cap	GF.25X875 SD Z	TQ
	Self Driller Drexmet Stitch	1/4-14 x 7/8" DP1	Zinc Cap Ptd.	GF.25X875 SD Z	Various
	Pan Head Decking Driller	#14-13 x 1-1/2" DP1	Coated	CF141.5 DP1	BL
	Pan Head Decking Driller	#14-13 x 2" DP1	Coated	CF142.0 DP1	BL

*Pressure treated material can be used.

Fasteners & Sub-Framing

	Description	Size	Material	CMP Code	Color
	Pan Head Decking Driller	#14-13 x 3" DP1	Coated	CF1430 DP1	BL
	Pan Head Decking Driller	#14-13 x 4" DP1	Coated	CF1440 DP1	BL
	Pan Head Decking Driller	#14-13 x 4-1/2" DP1	Coated	CF144.5 DP1	BL
	Pan Head Decking Driller	#14-13 x 5" DP1	Coated	CF145.0 DP1	BL
	Pan Head Decking Driller	#14-13 x 6" DP1	Coated	CF146.0 DP1	BL
	Pan Head Decking Driller	#14-13 x 7" DP1	Coated	CF1470.0 DP1	BL
	Pan Head Decking Driller	#14-13 x 8" DP1	Coated	CF1480.0 DP1	BL
	Pan Head Decking Driller	#14-13 x 9" DP1	Coated	CF149.0 DP1	BL
	Pop Rivet	1/8" #43	Stainless Steel	43S	MF
	Pop Rivet	1/8" #43	Stainless Steel Ptd.	43PS	Various

*Pressure treated material can be used.

	Part No.	Product	Material	Gauge	Length	Size
	Eave Plate	Eave Plate	Galvanized	16	10'	3/8" or 1" Height
	Rake Angle	Rake Angle Floating	Galvanized	16	10'	2", 2-3/8", or 3" Height
	Backer Plate	Backer Plate	Galvanized	18	10'	3-1/2" x 1/4"
	Valley Plate	Valley Plate	Galvanized	16	10'	12" x 12"
	Hip Ridge Plate	Hip/Ridge Plate	Galvanized	16	10'	12" x 12"
	Hat Section	1-1/2" Hat Section	Galvanized	16	10'	1-1/2" Height 2" Wide Top Leg

Roofing Coils

Steel Roofing Coil 24ga x 24"

Grade 50/AZ-50 Galvalume/Kynar 500 Finish

Part No.	Color	Part No.	Color	Part No.	Color
GC24AC24	Aged Copper	GC24DG24	Dove Grey	GC24PG24	Patina Green
GC24AP24	Antique Patina ¹	DC24DX24	Drexlume ²	GC24PW24	Preweathered Galvalume ¹
GC24BS24	Bright Silver ¹	GC24EM24	Everglade Moss	GC24RW24	Regal White
GC24BI24	Brilliance Red	GC24FG24	Forest Green	GC24SA24	Sandstone
GC24BW24	Bone White	GC24HG24	Hartford Green	GC24ST24	Sierra Tan
GC24BU24	Buckskin	GC24HM24	Hemlock Green	GC24SB24	Slate Blue
GC24BG24	Burgundy	GC24IB24	Island Blue	GC24SG24	Slate Gray
GC24CH24	Champagne ¹	GC24BR24	Mansard Brown	GC24STW24	Stone White
GC24CG24	Charcoal Gray	GC24BL24	Matte Black	GC24SU24	Surrey Beige
GC24CR24	Colonial Red	GC24MB24	Medium Bronze	GC24TB24	Teal Blue
GC24DB24	Dark Bronze	GC24MC24	Metallic Copper ¹	GC24TC24	Terra Cotta
GC24DS24	Deep Blue	GC24PB24	Pacific Blue		

¹CAUTION! Bright Silver, Antique Patina, Metallic Copper, Champagne and Preweathered Galvalume are directional paints. ²Drexlume is AZ55 with a clear acrylic coating.

Steel Roofing Coil 24ga x 22"

Grade 50/AZ-50 Galvalume/Kynar 500 Finish

Part No.	Color	Part No.	Color	Part No.	Color
GC24AC22	Aged Copper	GC24DG22	Dove Grey	GC24PG22	Patina Green
GC24AP22	Antique Patina ¹	DC24DX22	Drexlume ²	GC24PW22	Preweathered Galvalume ¹
GC24BS22	Bright Silver ¹	GC24EM22	Everglade Moss	GC24RW22	Regal White
GC24BI22	Brilliance Red	GC24FG22	Forest Green	GC24SA22	Sandstone
GC24BW22	Bone White	GC24HG22	Hartford Green	GC24ST22	Sierra Tan
GC24BU22	Buckskin	GC24HM22	Hemlock Green	GC24SB22	Slate Blue
GC24BG22	Burgundy	GC24IB22	Island Blue	GC24SG22	Slate Gray
GC24CH22	Champagne ¹	GC24BR22	Mansard Brown	GC24STW22	Stone White
GC24CG22	Charcoal Gray	GC24BL22	Matte Black	GC24SU22	Surrey Beige
GC24CR22	Colonial Red	GC24MB22	Medium Bronze	GC24TB22	Teal Blue
GC24DB22	Dark Bronze	GC24MC22	Metallic Copper ¹	GC24TC22	Terra Cotta
GC24DS22	Deep Blue	GC24PB22	Pacific Blue		

¹CAUTION! Bright Silver, Antique Patina, Metallic Copper, Champagne and Preweathered Galvalume are directional paints. ²Drexlume is AZ55 with a clear acrylic coating.

Steel Roofing Coil 28ga x 20"

Grade 50/AZ-50 Galvalume/Kynar 500 Finish – Low Gloss

Part No.	Color	Part No.	Color	Part No.	Color
GC28AB20	Aspen Bronze	GC28CB20	Chestnut Brown	GC28RB20	Raven Black
GC28AR20	Autumn Red	GC28GR20	Granite		
GC28BZ20	Bronze	GC28MG20	Midnight Green		

Steel Roofing Coil 24ga x 20"

Grade 50/AZ-50 Galvalume/Kynar 500 Finish

Part No.	Color	Part No.	Color	Part No.	Color
GC24AC20	Aged Copper	GC24DG20	Dove Grey	GC24PG20	Patina Green
GC24AP20	Antique Patina ¹	DC24DX20	Drexlume ²	GC24PW20	Preweathered Galvalume ¹
GC24BS20	Bright Silver ¹	GC24EM20	Everglade Moss	GC24RW20	Regal White
GC24BI20	Brilliance Red	GC24FG20	Forest Green	GC24SA20	Sandstone
GC24BW20	Bone White	GC24HG20	Hartford Green	GC24ST20	Sierra Tan
GC24BU20	Buckskin	GC24HM20	Hemlock Green	GC24SB20	Slate Blue
GC24BG20	Burgundy	GC24IB20	Island Blue	GC24SG20	Slate Gray
GC24CH20	Champagne ¹	GC24BR20	Mansard Brown	GC24STW20	Stone White
GC24CG20	Charcoal Gray	GC24BL20	Matte Black	GC24SU20	Surrey Beige
GC24CR20	Colonial Red	GC24MB20	Medium Bronze	GC24TB20	Teal Blue
GC24DB20	Dark Bronze	GC24MC20	Metallic Copper ¹	GC24TC20	Terra Cotta
GC24DS20	Deep Blue	GC24PB20	Pacific Blue		

¹CAUTION! Bright Silver, Antique Patina, Metallic Copper, Champagne and Preweathered Galvalume are directional paints. ²Drexlume is AZ55 with a clear acrylic coating.

Steel Roofing Coil 26ga x 24"

Grade 50/AZ-50 Galvalume/Kynar 500 Finish

Part No.	Color	Part No.	Color	Part No.	Color
GC26BG24	Burgundy	GC26DS24	Deep Blue	GC26BR24	Mansard Brown
GC26BI24	Brilliance Red	GC26DG24	Dove Gray	GC26BL24	Matte Black
GC26CG24	Charcoal Gray	DC26DX24	Drexlume ²	GC26MB24	Medium Bronze
GC26CR24	Colonial Red	GC26FG24	Forest Green	GC26SB24	Slate Blue
GC26DB24	Dark Bronze	GC26HG24	Hartford Green	GC26SG24	Slate Gray

²Drexlume is AZ55 with a clear acrylic coating.

Aluminum Roofing Coil .032 x 20"

#3105-H24 Alloy/Kynar 500 Finish

Part No.	Color	Part No.	Color	Part No.	Color
AC32BS20	Bright Silver	AC32DG20	Dove Gray	AC32RW20	Regal White
AC32BG20	Burgundy	AC32FG20	Forest Green	AC32SG20	Slate Gray
AC32CG20	Charcoal Gray	AC32HG20	Hartford Green	AC32TC20	Terra Cotta
AC32CR20	Colonial Red	AC32MB20	Medium Bronze		
AC32DB20	Dark Bronze	AC32MC20	Metallic Copper ¹		

¹CAUTION! Bright Silver, Metallic Copper, and Preweathered Galvalume are directional paints.

Roofing Coils

Aluminum Roofing Coil .040 x 22"

#3105-H24 Alloy/Kynar 500 Finish

Part No.	Color	Part No.	Color	Part No.	Color
AC40AC22	Aged Copper	AC40DG22	Dove Grey	AC40PW22	Preweathered Galvalume ¹
AC40AP22	Antique Patina ¹	AC40EM22	Everglade Moss	AC40RW22	Regal White
AC40BS22	Bright Silver ¹	AC40FG22	Forest Green	AC40SA22	Sandstone
AC40BI22	Brilliance Red	AC40HG22	Hartford Green	AC40ST22	Sierra Tan
AC40BW22	Bone White	AC40HM22	Hemlock Green	AC40SB22	Slate Blue
AC40BU22	Buckskin	AC40IB22	Island Blue	AC40SG22	Slate Gray
AC40BG22	Burgundy	AC40BR22	Mansard Brown	AC40STW22	Stone White
AC40CH22	Champagne ¹	AC40BL22	Matte Black	AC40SU22	Surrey Beige
AC40CG22	Charcoal Gray	AC40MB22	Medium Bronze	AC40TB22	Teal Blue
AC40CR22	Colonial Red	AC40MC22	Metallic Copper ¹	AC40TC22	Terra Cotta
AC40DB22	Dark Bronze	AC40PB22	Pacific Blue		
AC40DS22	Deep Blue	AC40PG22	Patina Green		

¹CAUTION! Bright Silver, Antique Patina, Metallic Copper, Champagne and Preweathered Galvalume are directional paints.

Aluminum Roofing Coil .040 x 23.812"

#3105-H24 Alloy/Kynar 500 Finish

Part No.	Color	Part No.	Color	Part No.	Color
AC40AC23	Aged Copper	AC40DG23	Dove Grey	AC40PW23	Preweathered Galvalume ¹
AC40AP23	Antique Patina ¹	AC40EM23	Everglade Moss	AC40RW23	Regal White
AC40BS23	Bright Silver ¹	AC40FG23	Forest Green	AC40SA23	Sandstone
AC40BI23	Brilliance Red	AC40HG23	Hartford Green	AC40ST23	Sierra Tan
AC40BW23	Bone White	AC40HM23	Hemlock Green	AC40SB23	Slate Blue
AC40BU23	Buckskin	AC40IB23	Island Blue	AC40SG23	Slate Gray
AC40BG23	Burgundy	AC40BR23	Mansard Brown	AC40STW23	Stone White
AC40CH23	Champagne ¹	AC40BL23	Matte Black	AC40SU23	Surrey Beige
AC40CG23	Charcoal Gray	AC40MB23	Medium Bronze	AC40TB23	Teal Blue
AC40CR23	Colonial Red	AC40MC23	Metallic Copper ¹	AC40TC23	Terra Cotta
AC40DB23	Dark Bronze	AC40PB23	Pacific Blue		
AC40DS23	Deep Blue	AC40PG23	Patina Green		

¹CAUTION! Bright Silver, Antique Patina, Metallic Copper, Champagne and Preweathered Galvalume are directional paints.

Steel and Aluminum Sheets

Steel Sheets 24ga x 48.375" x 120"

Grade 50/AZ-50 Galvalume/Kynar 500 Finish

Part No.	Color	Part No.	Color	Part No.	Color
GF24AC48	Aged Copper	GF24DG48	Dove Grey	GF24PG48	Patina Green
GF24AP48	Antique Patina ¹	DF24DX48	Drexlume ²	GF24PW48	Preweathered Galvalume ¹
GF24BS48	Bright Silver ¹	GF24EM48	Everglade Moss	GF24RW48	Regal White
GF24BI48	Brilliance Red	GF24FG48	Forest Green	GF24SA48	Sandstone
GF24BW48	Bone White	GF24HG48	Hartford Green	GF24ST48	Sierra Tan
GF24BU48	Buckskin	GF24HM48	Hemlock Green	GF24SB48	Slate Blue
GF24BG48	Burgundy	GF24IB48	Island Blue	GF24SG48	Slate Gray
GF24CH48	Champagne ¹	GF24BR48	Mansard Brown	GF24STW48	Stone White
GF24CG48	Charcoal Gray	GF24BL48	Matte Black	GF24SU48	Surrey Beige
GF24CR48	Colonial Red	GF24MB48	Medium Bronze	GF24TB48	Teal Blue
GF24DB48	Dark Bronze	GF24MC48	Metallic Copper ¹	GF24TC48	Terra Cotta
GF24DS48	Deep Blue	GF24PB48	Pacific Blue		

¹CAUTION! Bright Silver, Antique Patina, Metallic Copper, Champagne and Preweathered Galvalume are directional paints. ²Drexlume is AZ55 with a clear acrylic coating.

Aluminum Sheets .032 x 48" x 120"

#3003-H24 Alloy/Kynar 500 Finish

Part No.	Color	Part No.	Color	Part No.	Color
AF32BW	Bone White	AF32DG	Dove Gray	AF32MC	Metallic Copper ¹
AF32BS	Bright Silver ¹	AF32FG	Forest Green	AF32RW	Regal White
AF32BG	Burgundy	AF32HG	Hartford Green	AF32SA	Sandstone
AF32CG	Charcoal Gray	AF32BR	Mansard Brown	AF32SG	Slate Gray
AF32CR	Colonial Red	AF32BL	Matte Black	AF32TC	Terra Cotta
AF32DB	Dark Bronze	AF32MB	Medium Bronze		

¹CAUTION! Bright Silver and Metallic Copper are directional paints.

Aluminum Sheets .040 x 48" x 120"

#3003-H24 Alloy/Kynar 500 Finish

Part No.	Color	Part No.	Color	Part No.	Color
AF40BW	Bone White	AF40BR	Mansard Brown	AF40SA	Sandstone
AF40CG	Charcoal Gray	AF40BL	Matte Black	AF40SG	Slate Gray
AF40DB	Dark Bronze	AF40MB	Medium Bronze	AF40TC	Terra Cotta
AF40FG	Forest Green	AF40MC	Metallic Copper ¹		
AF40HG	Hartford Green	AF40RW	Regal White		

¹CAUTION! Metallic Copper is a directional paint.

Aluminum Sheets .050 x 48" x 120"

#3003-H24 Alloy/Kynar 500 Finish

Part No.	Color	Part No.	Color	Part No.	Color
AF50RW	Regal White	AF50DB	Dark Bronze	AF50MB	Medium Bronze

Roll Formers

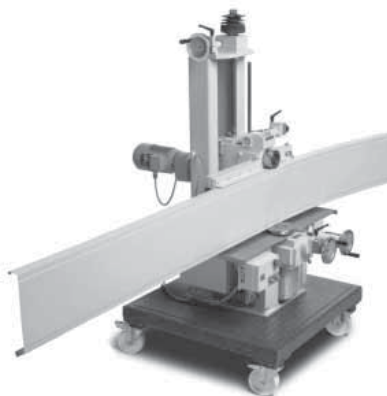
Roof Panel Machine



The most advanced, accurate, user-friendly multi-profile roof panel machine ever. Change tooling in 45 minutes or less with one wrench and no tape measure with SSQ. Contact Carlisle Metal Products for pricing.

Order Code	Description
SSQ	CM100SS, CM100NS, CM150SL, CM150SS, CM175S, CM200S
FWM	FW1
5VC	CMP
BGT	7" Straight Back, 7" Hook, 7" Back Flange Gutter

Curving Machine



Carlisle Metal Products Standing Seam Panel Curving Machine:

- Curves standing seam panels in a convex manner in heights of 1", 1-½", and 2".
- The Carlisle Metal Products panel curving machine is used for arch bending (convex) of metal shapes for roofing dormers and arched or vaulted roofs.
- Curves U-panels in a convex manner in heights of 2".
- Can curve panels into an elliptical shape.
- Curves tapered panels.
- Profiles: CM 100SS, CM 150SS and CM 200S
- For purchase or rental

Hemming Tool



Our hemming tool will save you time and headaches associated with properly field-bending the high and low sides of standing seam panels. We offer tools to accommodate all panel widths from 10 to 24 inches. Whether you want to hem the low sides or box the high sides, we have the right tool for your application.

Our steel tools put an end to:

- Exposed fasteners
- Sloppy, uneven hems
- Ice damming
- Low-quality tools
- Rusty panel ends
- Weak aluminum tools

Order Code	Description	Dimensions	Weight
CMP HEMTOOL 12	11.25" Hemming Tool	W=11.25" x D=1"	2.0 lbs
CMP HEMTOOL 16	15.25" Hemming Tool	W=15.25" x D=1"	2.25 lbs
CMP HEMTOOL 18	17.25" Hemming Tool	W=17.25" x D=1.5"	3.0 lbs
CMP HEMTOOL 20	20" Hemming Tool	W=20" x D=1.5"	3.25 lbs

Double-Handle Hemming Tool



The double-handle hemming tool provides an extra vertical and cross bar handle for better gripping when hemming wider panel widths, or panels in valleys.

Order Code	Description	Dimensions	Weight
CMP HEMTOOL 24	24" Double Handle Hemming Tool	W=24" x D=1.5"	4.75 lbs

Combo Turn Up/Hemming Tool



Combo tool gives you the ability to hem the low sides and box the high sides with one tool. This tool has depth locating pull pins to accommodate 1", 1.5", or 1.875" depths for hemming or boxing. An additional feature is the tapered sides that make removing the tool after boxing the high sides a breeze. The heavy-duty construction of this tool allows for five bending points when high-side boxing the panel with no cutting.

Order Code	Description	Dimensions	Weight
CMP HEMTOOL 16C	15.25" Turn Up/Hemming Combo Tool	W=15.25" x D=1.875"	6.5 lbs

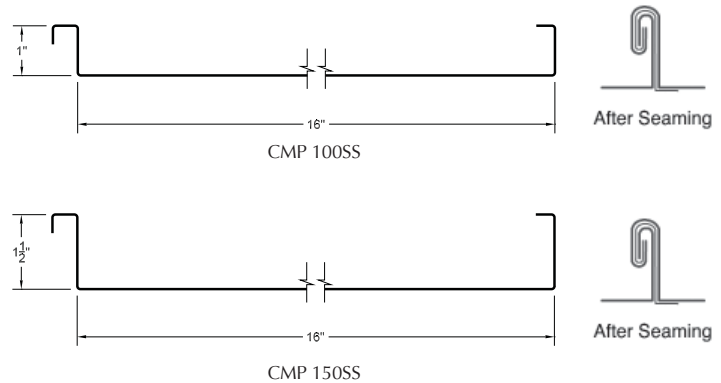
Seamers

SSX Seamer



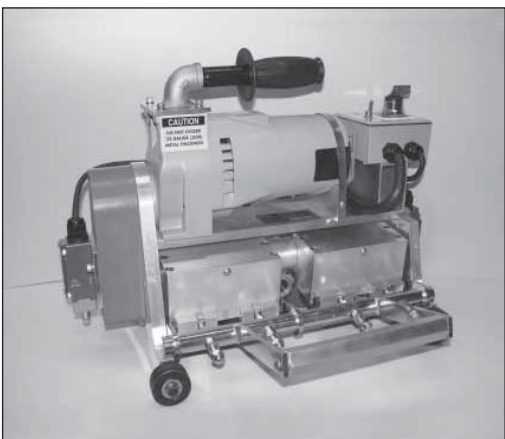
The SSX Seamer will form a complete double-lock standing seam with a single pass. Exclusive nose switch cuts the unit off if it comes to the edge of the roof, eliminating expensive and time-consuming accidents.

SSX Seamer for CM 100SS and CM 150SS, 1" and 1-½" - "Double Lock" Standing Seam Panels, 24 ga Painted Steel, .032" Alum., 16 - 20 oz copper.



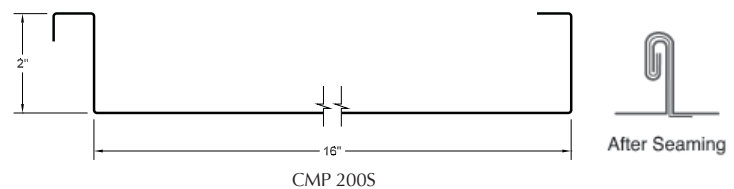
Order Code	Description
Seamer SSX	SSX Seamer 100SS
Seamer SSX	SSX Seamer 150SS

Industrial Seamer



The SS Industrial Seamer is designed to "Single Lock" and "Double Lock" the CM 200S in 22 – 24 ga. Steel, and .040" Aluminum. It is complete with our front mounted auto / safety switch for effective and safe operation. Forward acting for the Double Lock - 180° seam.

The SS Industrial Seamer is sold in kit form. It includes the Power Seamer with the two (2) sets of tooling for 180° seam, a 90° Lock Hand Tool, and the heavy-duty carrying case to protect your investment. 180° Double Lock hand tool sold separately.



Order Code	Description
Seamer SS	Double Lock Hand Seamer

90° Hand Seamer



- Single-lock hand seamer
- Forms the 90-degree bend
- For hard-to-reach places or to seam the whole roof
- Lightweight, easy-to-use
- Will not scratch or peel paint
- This tool can be used on profiles that measure 1/2" across the top
- For a double lock, pair up with the Finish Hand Seamer

Order Code	Description	Dimensions
HD SEAM 90C	Hand Seamer 100SS and 150SS	1/2" Panel Top Leg
200 SEAM 90	Hand Seamer 200S	3/8" Panel Top Leg

180° Hand Seamer



- Double-lock hand seamer
- Forms the 180-degree bend
- For hard-to-reach places or to seam the whole roof
- Lightweight, easy-to-use
- Will not scratch or peel paint
- This tool can be used on profile that measure 1/2" across the top

Note: Before using this tool prepare the seam with the First Stage Hand Seamer to a single-lock bend.

Order Code	Description	Dimensions
HD SEAM 180	Hand Seamer 100SS and 150SS	1/2" Panel Top Leg
200 SEAM 180	Hand Seamer 200S	3/8" Panel Top Leg



Hand Seamer (CM 200S)

Hand Tools

Straight Snip



Cuts straight and wide curves to the left and right. Use in either hand. Serrated blades. Meets ASME Standard B107.500-2010 (B107.16).

Order Code	Description
MW-P6716S	Straight Snip

Left Hand Offset Snip



Cuts straight and tight left curves. Easiest used in right hand. Bottom blade serrated. Meets ASME Standard B107.500-2010 (B107.16).

Order Code	Description
MW-P6510L	Left Hand Offset Snip

Right Hand Offset Snip



Cuts straight and tight right curves. Easiest used in left hand. Bottom blade serrated. Meets ASME Standard B107.500-2010 (B107.16).

Order Code	Description
MW-P6510R	Right Hand Offset Snip

Scratch Awl



3-1/2" (88.9mm) Scratch Awl. Use to scribe mark sheet metal and align holes. Forged of 8630 series steel for long-lasting point.

Order Code	Description
MW-A1	Scratch Awl

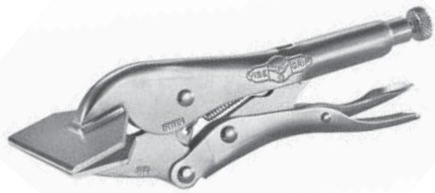
Seamer Tongs



Use straight handle seamer tong to bend or form sheet metal and other pliable sheet materials.

Order Code	Description
MW-ST1	3" Offset Seamer Tongs
MW-ST2	Forged Seamer Tongs

Vice Grips



8" locking sheet metal tool. Makes all kinds of bending, forming & crimping jobs easier & faster. Tool locks to work, leaving both hands free. Easy release trigger snaps jaws open instantly.

Order Code	Description
VICE GRIP 23	Vice Grip Locking Sheet Metal Tool

Tape Measure



1"-wide blade. Abrasion-resistant nylon coating. Double-riveted tip connection. Rubber-clad housing.

Order Code	Material
T430M	Tape Measure

Rivet Gun



The rivet tool is the most versatile and powerful hand riveter, taking the hard work out of setting large diameter blind rivets. Its extra long handles provide excellent leverage and permit working a foot beyond natural reach.

Order Code	Material
200RTI	Small Rivet Gun
2BDRT	Big Daddy Rivet Gun

Snow Guard

ColorGard®



ColorGard® dramatically reduces the risks associated with rooftop avalanches and maintains the clean colorful appearance of the roof with perfect color and finish matching, which lasts as long as the roof itself! ColorGard is the only snow retention system designed and engineered on a site-specific basis; guaranteed to perform, to not damage the roof or finish, and to exactly match the roof color — for the entire life of the roof.

Order Code	Description	Dimensions	Weight
COLORGARD 8FT	Snow Retention System	W=2.15" D = 8" L=1.5"	4.3 lbs

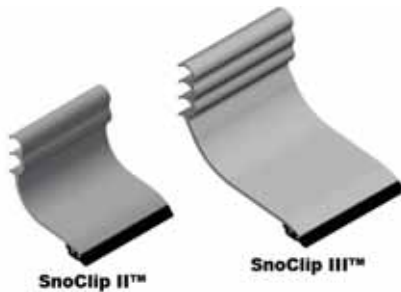
VersaClip™



VersaClip™ makes installation easy, as it simply slides on the ColorGard® crossmember.

Order Code	Description	Dimensions	Weight
#88 VERSACLIP	ColorGard Crossmember	W=1.5" x L=2.5"	.06 lbs

SnoClip™ II & III



This aluminum component retards the migration of snow and ice beneath the ColorGard® crossmember or SnoFence/SnoRail SnoRod™. It has a special integrated rubber foot to prevent abrasion of the panel's finish. SnoClip snaps to the back of the crossmember or rod and extends down to the flat of the roofing panel.

Order Code	Description	Dimensions	Weight
SNOCLIP II	Rib height up to 2"	H=3" W = 3"	.1682 lbs each
SNOCLIP III	Rib heights 1-3/4"-3"	H=3" W = 3"	.2652 lbs each

S5-PV Kit



The S-5-PV Kit is designed specifically to secure framed photovoltaic modules to standing seam metal roof systems without penetrating the roof's surface, without the use of a rail or violating the roof's warranty. The kit fits the majority of solar panels and metal roofs on the market — including exposed-fastened and corrugated profiles.

Order Code	Description	Dimensions	Weight
S5 PV KIT (excluding clamp)*	Photovoltaic Metal Roof Attachment Solution	W=2.83" x L=2.99"	.15 lbs

*PV KIT requires additional S-5 clamp.

S-5-E & S-5-E Mini



The S-5-E is designed especially for double-folded standing seam roofs that are so popular all over Europe (and in the U.S.). The S-5-E is a bit smaller and less expensive than the S-5-U, but every bit as strong.

Order Code	Description	Dimensions	Weight	Panel Profiles
S5E	Non-penetrating Metal Roof Utility Attachment Solution	W=1.5" D = 2" L=1.5"	.24 lbs w/hardware	100SS or 150SS (180°)
S5EM	Attachment Solution	W=1.5" D = 1.18" L=1.5"	.22 lbs w/hardware	100SS or 150SS (180°)

S-5-U & S-5-U Mini



The S-5-U is by far our most popular and most versatile clamp. It fits about 85% of the standing seam profiles manufactured in North America — including most structural and many popular architectural profiles. The S-5-U can be used on vertically oriented seams and, by rotating the clamp 90°, it can also be used on most horizontal 2" seam profiles.

Order Code	Description	Dimensions	Weight	Panel Profiles
S5U	Non-penetrating Metal Roof Utility Attachment Solution	W=1.5" D = 2" L=1.5"	.25 lbs w/hardware	100NS, 175S, and 200S
S5UM	Attachment Solution	W=1.5" D = 1.18" L=1.5"	.22 lbs w/hardware	100NS, 175S, and 200S

S-5-S & S-5-S Mini



The S-5-S clamp is an extraordinarily versatile clamp. It was created especially for popular snap-together profiles —including residential profiles. The S-5-S or S-5-S Mini can be used on horizontal seams under .540 inches to avoid field crimping the seam.

Order Code	Description	Dimensions	Weight	Panel Profiles
S5S	Non-penetrating Metal Roof Utility Attachment Solution	W=1.5" D = 2" L=1.5"	.25 lbs w/hardware	150SL and 150SS (90°)
S5SM	Attachment Solution	W=1.5" D = 1.18" L=1.5"	.22 lbs w/hardware	150SL and 150SS (90°)

VersaBracket-47™



VersaBracket-47™ can be used to mount almost anything to an exposed-fastened roof system and is compatible with almost any trapezoidal exposed-fastened profile. No messy sealants to apply. No chance for leaks. The VersaBracket comes with factory-applied butyl sealant already in the base, and the S-5 patented reservoir conceals the sealant from UV exposure, preventing drying and cracks.

Order Code	Description	Dimensions	Weight
#47 VERSABRACK	Exposed-Fastened Metal Roof Attachment Solution	W=2.65" D = 2.88" L=2.85"	.15 lbs

Sealant

Tube Sealant



Where To Use

Construction applications include: perimeter sealing of windows, doors and skylights; fascia expansion joints, siding, parapets/flashing, precast/tilt-up, and curtain wall internal joints.

Structures include: schools, parking plazas, store fronts, stadiums and prisons.

Specially formulated for metal roofs or any other application requiring high performance. All caulks are one-component, high-performance, non-sag, multi-purpose elastomeric sealant.

Part Number	Description	Containers	Dimensions
DM1000BL	Smooth Polysiloxanes Caulk (Black)	30	10.3 oz Tube
DM1000BI	Smooth Polysiloxanes Caulk (Brilliance Red)	30	10.3 oz Tube
DM1000BZ	Smooth Polysiloxanes Caulk (Bronze)	30	10.3 oz Tube
DM1000CG	Smooth Polyurethane Caulk (Charcoal Gray)	30	10.3 oz Tube
DM1000DB	Smooth Polysiloxanes Caulk (Dark Bronze)	30	10.3 oz Tube
DM1000GRN	Smooth Polysiloxanes Caulk (Green)	30	10.3 oz Tube
DM1000GRY	Smooth Polysiloxanes Caulk (Grey)	30	10.3 oz Tube
DM1000FG	Smooth Polysiloxanes Caulk (Forest Green)	30	10.3 oz Tube
DM1000HG	Smooth Polysiloxanes Caulk (Hartford Green)	30	10.3 oz Tube
DM1000BR	Smooth Polysiloxanes Caulk (Mansard Brown)	30	10.3 oz Tube
DM1000SA	Smooth Polysiloxanes Caulk (Sandstone)	30	10.3 oz Tube
DM1000TRS	Smooth Polysiloxanes Caulk (Translucent)	30	10.3 oz Tube
DM1000WHI	Smooth Polysiloxanes Caulk (White)	30	10.3 oz Tube

Caulk Gun



For use with 10.3 oz tube sealant. Includes cutter and punch.

Order Code	Description
MODEL 188	Caulk Gun

Butyl Tape-Seal™ For Metal Roofing and Wall Panels



BUTYL TAPE-SEAL™ was designed specifically for the metal building industry to provide optimal sealing in the harshest environments. It adheres to most clean, dry metal surfaces and does not harden, bleed or stain. With pressure, it fills minor irregularities in the surface and seals the joints providing an effective barrier against water, moisture, dust, and dirt. BUTYL TAPE-SEAL™ is an excellent choice for use around windows, doors, roof vents, stacks, access doors, and other penetration points.

Easy to install! Specially formulated for use on metal roof and wall panels.

Part Number	Material	Rolls/Ctns	Ctns/Pallet	Dimensions
BUTYL DBL BEAD	Double Bead Tape	10	48	T=3/16", W=7/8", L=40'

Pipe-Master™ Pipe Flashing For Metal Roof System



- Flexible, weather-resistant EPDM rubber or silicone
- Appropriate pipe size diameter listed on flashing to assure proper fit
- Aluminum base is flexible to conform to any panel profile
- Grey EPDM is ozone and ultraviolet resistant

Part No.	Description	Material	Containers	Dimensions
1 EPDM	EPDM Pipe Boot	EPDM	1	3/4" - 4"
2 EPDM	EPDM Pipe Boot	EPDM	1	1-3/4" - 3-1/4"
3 EPDM	EPDM Pipe Boot	EPDM	1	1/4" - 4"
4 EPDM	EPDM Pipe Boot	EPDM	1	3" - 6"
5 EPDM	EPDM Pipe Boot	EPDM	1	4" - 7"
6 EPDM	EPDM Pipe Boot	EPDM	1	4" - 7"
7 EPDM	EPDM Pipe Boot	EPDM	1	6" - 11"
8 EPDM	EPDM Pipe Boot	EPDM	1	8" - 13"
9 EPDM	EPDM Pipe Boot	EPDM	1	10" - 18"
RETRO 1 EPDM	EPDM Pipe Boot	EPDM	1	1/2" - 4"
RETRO 2 EPDM	EPDM Pipe Boot	EPDM	1	4" - 9-1/4"

Drexmet® Paint Pens



Carlisle Metal Products offers the DREXMET® Paint Pen, the first easy-to-use air-dry Kynar touch-up paint for metal roofs. The Drexmet Paint Pen is the first of its kind in the industry and utilizes a Fluoropolymer Air Dry System. Developed with the contractor in mind, the Drexmet Paint Pen is the lower cost and more efficient alternative to other touch up systems. It allows contractors to quickly and easily touch up scratches on the metal panels, saving time, money and future potential problems. No waste, no spillage, no brushes and no cleanup. The Drexmet Paint Pen is available in all of our stock colors and has a shelf life of up to six years.

Part No.	Color	Part No.	Color	Part No.	Color
PPAC	Paint Pen (Aged Copper)	PPDS	Paint Pen (Deep Blue)	PPPB	Paint Pen (Pacific Blue)
PPAP	Paint Pen (Antique Patina)	PPDG	Paint Pen (Dove Gray)	PPPG	Paint Pen (Patina Green)
PPBW	Paint Pen (Bone White)	PPEM	Paint Pen (Everglade Moss)	PPPW	Paint Pen (Prewthd Galv)
PPBS	Paint Pen (Bright Silver) ¹	PPFG	Paint Pen (Forest Green)	PPRW	Paint Pen (Regal White)
PPBR	Paint Pen (Brilliance Red)	PPHG	Paint Pen (Hartford Green)	PPSA	Paint Pen (Sandstone)
PPBU	Paint Pen (Buckskin)	PPHM	Paint Pen (Hemlock Green)	PPST	Paint Pen (Sierra Tan)
PPBG	Paint Pen (Burgundy)	PPIB	Paint Pen (Island Blue)	PPSB	Paint Pen (Slate Blue)
PPDB	Paint Pen (Champagne)	PPBR	Paint Pen (Mansard Brown)	PPSG	Paint Pen (Slate Gray)
PPCG	Paint Pen (Charcoal Gray)	PPBL	Paint Pen (Matte Black)	PPSTW	Paint Pen (Stone White)
PPCR	Paint Pen (Colonial Red)	PPMB	Paint Pen (Medium Bronze)	PPSU	Paint Pen (Surrey Biege)
PPDB	Paint Pen (Dark Bronze)	PPMC	Paint Pen (Metallic Copper)	PPTB	Paint Pen (Teal Blue)
				PPTC	Paint Pen (Terra Cotta)

Note: All metallic colors are in brush-top bottles.

Underlayment

WIP 300HT High-Temperature Protection Self-Adhering Roofing Underlayment



WIP 300HT is a high-tensile-strength rubberized asphalt underlayment specifically designed to withstand temperatures up to 250°F (121°C). Ideal for use under metal including copper, zinc and COR-TEN® (consult technical department for installation instructions), WIP 300HT can also be used under synthetic, concrete and clay tiles and asphalt shingles. This strong, skid-resistant membrane is available in either black or white and provides superior protection from water penetration caused by wind-driven rain and ice dams.

Features and Benefits

- Protects the roof structure from water seepage caused by ice dams and wind-driven rains
- Resists temperatures up to 250°F without degradation of the adhesive
- Seals around roofing nails, staples and screws
- Split-release film provides easier, faster installation
- Resists cracking, drying and rotting, providing long-term waterproofing performance and low lifecycle cost
- Concealed waterproofing system will not detract from the architectural aesthetics of the primary roofing system
- Exposed rubberized asphalt bead along the membrane edge ensures watertightness of lap seams

Standards

- UL Classified
- ICC-ES ESR #2206
- 2009 and 2012 International Building Code™
- 2007 Florida Building Code Approved Product #6785
- Meets ASTM D1970

Standards

WIP 300HT roofing underlayment rolls should be stored on their side, under cover and in areas where the temperature is between 40° and 100°F (4.4° and 38°C). **Do not double-stack pallets.**

Warranty

Carlisle WIP products are backed by Carlisle's industry-leading warranty. Carlisle WIP Products will display optimal performance when stored under recommended conditions and used within one year of date of manufacture. Product installed after one year of date of manufacture is not covered under defect warranty. Visit our website for warranty details.

Limitations

- WIP 300HT should be installed when air, roof deck and membrane temperatures are at or above 40°F (4.4°C).
- WIP 300HT should not be left exposed to sunlight for more than 60 days for black membrane or 120 days for white membrane.
- WIP 300HT membrane should not be folded over the roof edge unless protected by a gutter or other flashing materials.
- The primary roof system must be ventilated to prevent excessive moisture build-up in the interior structure.
- Use caution during the installation of the membrane as it may become slippery when wet or covered with frost.
- WIP 300HT must not be used in contact with flexible PVC material.
- WIP 300HT is not approved for use in foam set tile applications.

Product Specifications

Physical Properties		
Surface	Black/White Engineered Polyolefin Composite Film with Factory-applied Anti-skid Coating	
Membrane	Rubberized Asphalt	
Product Characteristic	Units	Results
Roll Length	feet	66
Roll Weight	lbs	55
Roll Size	sq ft	198
Roll Width	inches	36
Typical Performance Properties	Test Method	Results
Thickness	ASTM D1970	40 mils
Low Temperature Flexibility	ASTM D1970	-45°F
Adhesion to Plywood at 75°F	ASTM D1970	35 lbs/ft
Lap Seam Adhesion at 75°F	ASTM D1970	21 lbs/ft
Sealability Around Nail	ASTM D1970	Pass
Slip Resistance	ASTM D1970	Pass
Thermal Stability	ASTM D1970	Pass
Moisture Vapor Permeance	ASTM D1970	0.02 perms
Water Absorption	ASTM D1970	0.5%
Tensile Strength Machine Direction	ASTM D412	250 psi
Tensile Strength Transverse Direction	ASTM D412	1390 psi
Elongation at Break Machine Direction	ASTM D412	250%
Elongation at Break Transverse Direction	ASTM D412	170%
Packaging Information		
Boxes (rolls) per pallet		25

Warranties

Warranties are only as strong as the company that stands behind them. From materials to installation, no one offers owners more responsive and reliable warranty protection than Carlisle Metal Products. Our long history in the single-ply commercial roofing industry has given Carlisle a leadership position when it comes to performance and warranties. We are committed to the products we manufacture and sell, and just like our industry-leading single-ply Total System Warranties, Carlisle Metal Products' Weathertight Limited Warranties are the best in their class.

Paint and Substrate Warranties

- 35-Year Non Pro-rated Kynar® Paint Limited Warranty with a 20 year Galvalume® Substrate Limited Warranty
- 35-Year Non Pro-rated Kynar® Paint Limited Warranty and 25 year Aluminum Substrate Limited Warranty
- 20-Year Non Pro-rated International Kynar® Paint Limited Warranty
- 25-Year Non Pro-rated Drexlum™ (Acrylic Coated Galvalume®) Limited Warranty

*Please contact your Carlisle Metal Products representative when installing our products in high-salt environments.

Weathertight Limited Warranty Program

- **Weathertight limited warranties that truly protect the owner** – Carlisle Metal Products warranties are fully transferable to a future owner.
- **Weathertight limited warranties that fit your budget** – Single-Source Weathertight Warranties are available in many different options to fit your budget:
 - 5-year Weathertight Limited Warranty
 - 10-year Weathertight Limited Warranty including no dollar limit warranties
 - 15-year Weathertight Limited Warranty including no dollar limit warranties
 - 20-year Weathertight Limited Warranty including no dollar limit warranties

NOTE: Longer-term warranties are available upon request and after project review.



P.O. Box 7000 / Carlisle, PA 17013 / Phone: 800.479.6832 / Fax: 717.245.7053

Carlisle is a trademark of Carlisle. Roofing on Demand is a trademark of Drexel Metals.
REPRINT CODE: XXXXXX – "Carlisle Metal Products Accessory Catalog" – 02.18.13 © 2013 Carlisle.