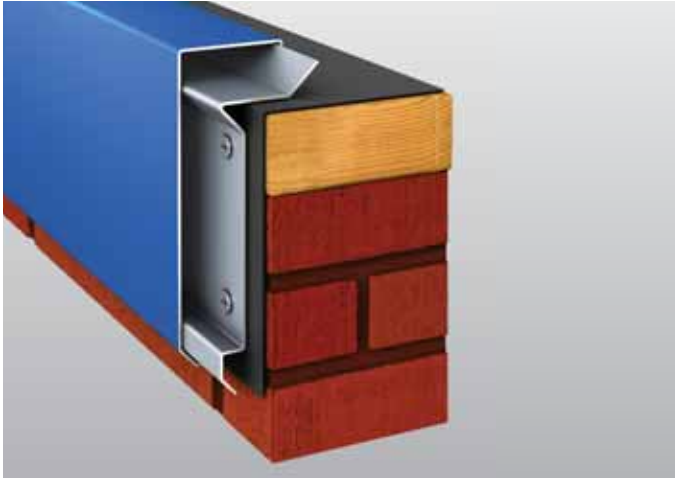


SecurEdge™ 4000 Fascia



Overview

Carlisle's SecurEdge 4000 Fascia for single-ply commercial roof systems is a two-piece assembly that includes a continuous cleat and a decorative fascia cover. Available in pre-painted Kynar 500®-coated .040" formed aluminum and 24-gauge Galvalume steel, this product features 22-gauge pre-punched cleats with fasteners spaced at 12" on center. SecurEdge 4000 Fascia is offered in standard 10' cleat and coping cover lengths; concealed splice plates and fasteners are included with purchase.

Features and Benefits

- » Terminates roof membrane to parapet walls
- » Allows for the use of high-torque screws without penetrating the top surface of the membrane
- » Pre-punched continuous cleat
- » Stock sizes for quick delivery
- » ANSI-SPRI ES-1 Tested
- » Mill finish aluminum and clear anodized finishes are available

Installation

For complete installation instructions, refer to Carlisle specifications and details or visit www.carlislesyntec.com.

Quality Assurance

Fascia is tested per ANSI/SPRI Test Method RE-2 for Fascia. Fascia is certified by Carlisle to design pressures as indicated in current edition of SPRI's Wind Resistance Standard for Edge Systems Used with Low-Slope Roofing Systems. This product meets the International Building Code minimum requirement.

Technical Services

Engineering and shop drawings, as well as long-form specifications and CAD details, are available from Carlisle. Product samples, detail sheets, color chips, and color charts are also available for submittal packages. For assistance with questions or submittals, contact Carlisle or your local manufacturer's representative.

Specifications

Material	Face	Sustained Pressures
24-gauge	up to 8"	-210 psf (*)
0.040 Aluminum	up to 8"	-180 psf (*)

* Design Engineer must apply the Factor of Safety.

ADDITIONAL GAUGES - .050 and .063 aluminum and 22-gauge Galvalume are available upon request.